

EJS-GE-D3

EXPANSION JOINT

Valveco®

epdm rubber bellow, pn16, flanged

Technical Features

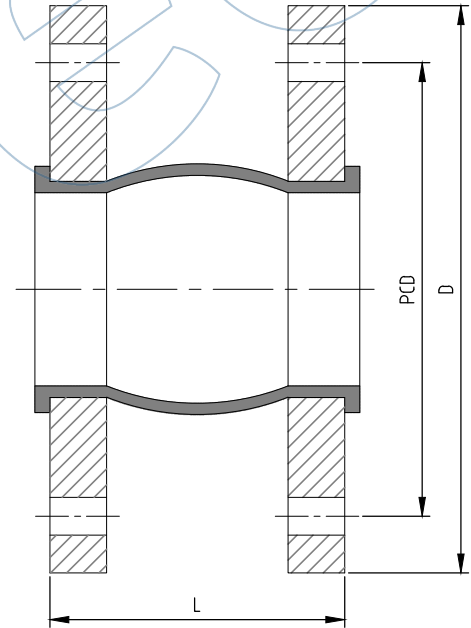
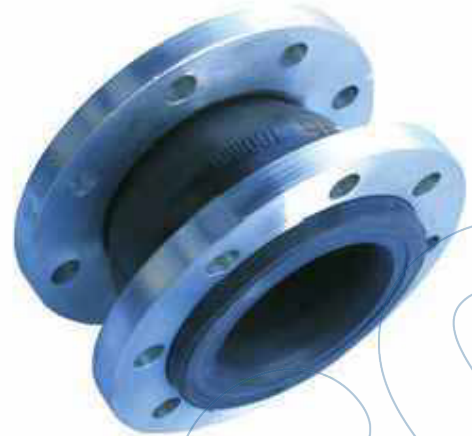
Class	PN16
Inlet Design	EN 1092 (DIN 2501)
Outlet Design	EN 1092 (DIN 2501)

Options

- Other materials, flange connections and nominal sizes on request
- Vacuum ring
- Tie rods

Dimensions

DN (MM)	Length (MM)	PCD (MM)	Holes (#)	Holes Dia (MM)	Weight (kg)
32	130	100	4	18 (M16)	2
40	130	110	4	18 (M16)	2
50	130	125	4	18 (M16)	3
65	130	145	4	18 (M16)	3
80	130	160	8	18 (M16)	5
100	130	180	8	18 (M16)	6
125	130	210	8	18 (M16)	7
150	130	240	8	22 (M20)	10
200	130	295	12	22 (M20)	15
250	130	355	12	26 (M24)	20
300	130	410	12	26 (M24)	25
350	203	470	16	26 (M24)	43
400	203	525	16	30 (M27)	



Materials

Bellow	EPDM
Flange Material	Forged steel

All the product information presented on these pages is only indicative and is provided subject to typographical errors, changes and deviations. The buyer cannot derive any rights from this information. The seller excludes any liability for damage resulting from the use of this information.