

# CHL-IB-D2

## CHECK VALVE

Valveco®

lift type, straight pattern, for horizontal and vertical (upward flow)  
positioning, bolted cover, cast iron body, bronze trim, pn10, flanged

### Technical Features

Class	PN10
Face-to-Face Design	EN-558-1 (DIN 3202-/F1)
Inlet Design	EN 1092 (DIN 2501)
Outlet Design	EN 1092 (DIN 2501)

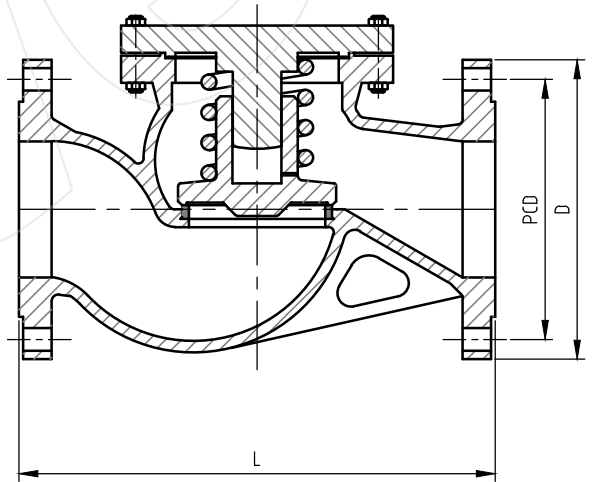
### Options

- Available in various Materials

\*\*\* Smaller sizes refer to data sheet CHL-IB-D3 \*\*\*

### Dimensions

DN	Length	PCD	Holes	Holes Dia	Weight
(MM)	(MM)	(MM)	(#)	(MM)	(kg)
200	600	295	8	22 (M20)	111



### Materials

Body / Bonnet	Cast Iron GG25 (EN-GJL-250)
Stem	Brass Ms 58
Spring	Stainless Steel
Disc ≤ 65	Bronze Rg 5
Disc > 65	Cast Iron GG25
Disc / Seat Ring ≤ 65	Solid Bronze Rg5
Disc / Seat Ring > 65	Bronze Rg5
Gasket	Graphite

All the product information presented on these pages is only indicative and is provided subject to typographical errors, changes and deviations. The buyer cannot derive any rights from this information. The seller excludes any liability for damage resulting from the use of this information.